



Mercer County 4-H October 2025 NEWSLETTER

Mercer County Cooperative Extension Service
Dana R. Anderson
Extension Agent for 4-H Youth Development
1007 Lexington Road, Harrodsburg, Kentucky 40330
Phone - 859-734-4378 Fax - 859-734-4379
Email - dana.anderson@uky.edu
Web Address: <http://mercerc.ca.uky.edu>



MERCER COUNTY 4-H YOUTH AGRICULTURAL INVESTMENT PROGRAM (YAIP)

- Money for on-farm investments available
- Applicants must be 9 years old & enrolled in elementary, middle or high school (includes home-schooled)
- Investment areas eligible:
 - Ag Diversification
 - Animal Production
 - Forage & Grain Improvement
 - Showmanship
 - Supervised Agriculture Experience (SAE)
 - Country Ham Projects
- Cost-share on a 50/50 basis
- Eligible up to \$1,500. per program year
- Youth must complete educational components

**APPLICATION PERIOD WILL BE
OCTOBER 1-31, 2025**

APPLICATIONS AVAILABLE FROM:

Mercer County Extension Service

1007 Lexington Road, Harrodsburg, KY 40330

8:00 a.m. - 4:30 p.m. Monday-Friday

FOR MORE INFORMATION:



Call 859-734-4378

Dana Anderson



dana.anderson@uky.edu

Linda McClanahan



linda.mcclanahan@uky.edu

MERCER COUNTY 4-H

PUMPKIN Decorating

PLEASE RSVP BY
CALLING (859) 734-4378

Class



YOUTH AGES 6-18
WELCOME PARENTS
MUST STAY WITH
CHILDREN 6-8


ALL SUPPLIES PROVIDED*

October
3

*BRING YOUR
OWN PUMPKIN
[AT]

3:30-5:00 PM

Mercer County Extension Office
1007 Lexington Rd, Harrodsburg, KY 40330



4-H

PUMPKIN DAY



CONTEST

OCTOBER 2-4, 2025
MERCER CO. EXTENSION
OFFICE


OPEN TO ALL 4-H YOUTH
PREMIUMS WILL BE
AWARDED

PLEASE REFER TO THE
ATTACHED DOCUMENT
COMPLETE LIST OF
CATEGORIES



4-H Pumpkin Day Celebration

Entry Check in Thursday, October 2, 4-6PM and
Friday October 3 @ 9am- 12PM – Judging to follow Friday October 3rd.
Items will be on display Saturday October 4th from 10-2
@ Mercer County Extension Office, 1007 Lexington Rd, Harrodsburg KY



All participants will receive ribbons and premiums - Blue ribbon - \$3.00, Red Ribbon - \$2.00 and White ribbon - \$1.00 (awarded at the 4-H banquet). The categories are as follows:

Pumpkin Contest:

- ✓ Best Jack-O-Lantern (carved)
- ✓ Best Painted pumpkin
- ✓ Best decorated pumpkin
- ✓ Ugliest Pumpkin (decorated)
- ✓ Oddest shaped pumpkin
- ✓ Smallest pumpkin
- ✓ Biggest pumpkin (By weight)
- ✓ Carved & Painted pumpkin

Foods Competition:

- ✓ Best Pumpkin Pie
- ✓ Pumpkin Cookies (3)
- ✓ Decorated Pumpkin Cookies
- ✓ Pumpkin Bread/muffins
- ✓ Decorated Cup Cakes
- ✓ Decorated Pumpkin Cake
- ✓ Pumpkin bars
- ✓ Halloween Candy (homemade)
- ✓ Roasted pumpkin seeds
- ✓ Pumpkin Cake (must have pumpkin in ingredients)

Pumpkin Photos:

Photos subject should relate to horticulture/fall crops/pumpkins.

The photos should be mounted on matte or poster board.

- ✓ Single photo (can be enlarged)
- ✓ Single black and white. Horticultural subject or activity
- ✓ Sequence of 4 -color photos
- ✓ Horticulture collection (Black & White or Color) consisting of 6 photographs

Arts & Crafts:

- ✓ Decorated T-shirt
- ✓ Door Decoration
- ✓ Home Decoration
- ✓ Table decoration
- ✓ Trick or Treat Bag or bucket
- ✓ Picture Frame
- ✓ Wearable decoration (no T-shirts, can be decorative pens, hats, etc.)
- ✓ Miscellaneous (4-H can only have 1 item in this category)

There will NOT be any additions to the entry list.





Harvest, Home, and Table Fair

Join us to celebrate the new season at our Harvest, Home and Table Fair! A county fair style showcase of all your fall themed creations! This year we have added:

- Giant Pumpkin Contest
- People's Choice Award Decorated Pumpkin Contest benefiting Coins for Change Charity
- Trunk or Treat 12PM-2PM
- Inflatable Slide 10AM-2PM
- Box Lunch available for 6 dollars! 11AM-1PM

Check In: Friday, October 3rd 9AM-12:30PM

Viewing and Activities: Saturday, October 4th 10AM-2PM

Check Out: Monday, October 6th 9AM-3PM

All activities will take place at the Mercer County Extension Office.

1007 Lexington Road, Harrodsburg, KY 40330

Questions? Call us at 859-734-4378

ITEM TAGS WILL BE AVAILABLE THE DAY OF CHECK IN. JUST COME WITH YOUR ITEMS READY DAY OF. THERE IS NO ADMISSION FEE FOR VIEWING, PLEASE BRING THE FAMILY AND VIEW THE COMMUNITIES CREATIONS.

Cooperative Extension Service

Agriculture and Natural Resources
Family and Consumer Sciences
4-H Youth Development
Community and Economic Development

MARTIN-GATTON COLLEGE OF AGRICULTURE, FOOD AND ENVIRONMENT

Educational programs of Kentucky Cooperative Extension serve all people regardless of economic or social status and will not discriminate on the basis of race, color, ethnic origin, national origin, creed, religion, political belief, sex, sexual orientation, gender identity, gender expression, pregnancy, marital status, genetic information, age, veteran status, physical or mental disability or reprisal or retaliation for prior civil rights activity. Reasonable accommodation of disability may be available with prior notice. Program information may be made available in languages other than English. University of Kentucky, Kentucky State University, U.S. Department of Agriculture, and Kentucky Counties, Cooperating. Lexington, KY 40506



Disabilities accommodated with prior notification.



Mercer County 4-H Poultry Club



**Monday, October 27
6:30 p.m.**

Mercer County Extension Office

- Open to all youth 6-18 years old
Cloverbuds must have a parent
with them at the meetings
- Youth **MUST** have 6 hours of
classroom instruction through
4-H activities to show poultry
or compete in 4-H poultry
events

**Learn about different poultry and
how to care and show them.**

**Scan code to
join text
remind
notification
or text
@poultrymer
to 81010**



**October 27
November 25
January 26
February 23
March 23
April 27
May 25**



MERCER COUNTY 4-H RABBIT CLUB



MERCER COUNTY EXTENSION OFFICE
6:30 P.M.

OCTOBER 16
NOVEMBER 13
JANUARY 8

FEBRUARY 12
MARCH 12
APRIL 9
MAY 14



We will be partnering with King Middle School FFA. The club will be focusing on the care of rabbits, showmanship, and more.

Open to all ages - cloverbuds must have a parent with them for the meetings



If you plan on showing rabbits at the 4-H Show, you MUST have 6 hours of classroom instruction through approved 4-H activity.

to receive club updates please text
@rabbitmer to #81010

Cooperative Extension Service

Agriculture and Natural Resources
Family and Consumer Sciences
4-H Youth Development
Community and Economic Development

MARTIN-GATTON COLLEGE OF AGRICULTURE, FOOD AND ENVIRONMENT

Educational programs of Kentucky Cooperative Extension serve all people regardless of economic or social status and will not discriminate on the basis of race, color, ethnic origin, national origin, creed, religion, political belief, sex, sexual orientation, gender identity, gender expression, pregnancy, marital status, genetic information, age, veteran status, physical or mental disability or reprisal or retaliation for prior civil rights activity. Reasonable accommodation of disability may be available with prior notice. Program information may be made available in languages other than English. University of Kentucky, Kentucky State University, U.S. Department of Agriculture, and Kentucky Counties, Cooperating. Lexington, KY 40506



Disabilities
accommodated
with prior notification.



CAT CLUB




October 2
November 6
December 4
January 8

February 5
March 5
April 16
May 7

@ 6:00 p.m.

Mercer Co. Extension
1007 Lexington Rd
Harrodsburg, KY
859-734-4378



You will get to have hands-on experiences while learning about domestic cats and their wild cat cousins as well

Open to both Cloverbuds and regular 4-H Members

Scan QR code to join the remind or text @cat4hclub to 81010

Cooperative Extension Service

Agriculture and Natural Resources
Family and Consumer Sciences
4-H Youth Development
Community and Economic Development

MARTIN-GATTON COLLEGE OF AGRICULTURE, FOOD AND ENVIRONMENT

Educational programs of Kentucky Cooperative Extension serve all people regardless of economic or social status and will not discriminate on the basis of race, color, ethnic origin, national origin, creed, religion, political belief, sex, sexual orientation, gender identity, gender expression, pregnancy, marital status, genetic information, age, veteran status, physical or mental disability or reprisal or retaliation for prior civil rights activity. Reasonable accommodation of disability may be available with prior notice. Program information may be made available in languages other than English. University of Kentucky, Kentucky State University, U.S. Department of Agriculture, and Kentucky Counties, Cooperating.

Lexington, KY 40506



Disabilities
accommodated
with prior notification

4-H HORSE CLUB MEETING



ON THE FARM MEETING
Monday, October 20
4649 Bondville Rd
Salvisa, KY 40372
6:00 p.m.

NOVEMBER 17
DECEMBER 15
JANUARY 19
FEBRUARY 16
MARCH 16
APRIL 20
MAY 18



- Youth will learn the basics of horsemanship, horse health, equine related careers and more.
- You do not have to have a horse to be in the club.
- Open to youth 9 -18 years old

Cooperative Extension Service

Agriculture and Natural Resources
Family and Consumer Sciences
4-H Youth Development
Community and Economic Development

MARTIN-GATTON COLLEGE OF AGRICULTURE, FOOD AND ENVIRONMENT

Educational programs of Kentucky Cooperative Extension serve all people regardless of economic or social status and will not discriminate on the basis of race, color, ethnic origin, national origin, creed, religion, political belief, sex, sexual orientation, gender identity, gender expression, pregnancy, marital status, genetic information, age, veteran status, physical or mental disability or reprisal or retaliation for prior civil rights activity. Reasonable accommodation of disability may be available with prior notice. Program information may be made available in languages other than English. University of Kentucky, Kentucky State University, U.S. Department of Agriculture, and Kentucky Counties, Cooperating. Lexington, KY 40506



Disabilities
accommodated
with prior notification.

Mercer County 4-H Livestock Club



- Open to all youth 6-18 years old
- Focus on: Beef, Dairy, Sheep, Goat & Swine
- Youth **MUST** have 6 hours of classroom instruction through 4-H activities to show livestock or compete in livestock events

Mercer County Extension Office
6:00-7:00 PM

October 21

January 20

November 18

April 21



Scan code to join text remind notification or
text @livemer to 81010

**Any adult interested in being a livestock leader,
please contact the
Mercer County Extension Office 859-734-4378**

**Cooperative
Extension Service**

Agriculture and Natural Resources
Family and Consumer Sciences
4-H Youth Development
Community and Economic Development

MARTIN-GATTON COLLEGE OF AGRICULTURE, FOOD AND ENVIRONMENT

Educational programs of Kentucky Cooperative Extension serve all people regardless of economic or social status and will not discriminate on the basis of race, color, ethnic origin, national origin, creed, religion, political belief, sex, sexual orientation, gender identity, gender expression, pregnancy, marital status, genetic information, age, veteran status, physical or mental disability or reprisal or retaliation for prior civil rights activity. Reasonable accommodation of disability may be available with prior notice. Program information may be made available in languages other than English. University of Kentucky, Kentucky State University, U.S. Department of Agriculture, and Kentucky Counties, Cooperating. Lexington, KY 40506



Disabilities
accommodated
with prior notification.

MERCER COUNTY 4-H

OUTDOOR EXPLORERS CLUB

Join us as we explore the outdoors throughout the year!

Meeting dates: Sept 29, Nov 3, Dec 1, Jan 5, Feb 2,
Mar 2, April 6, & May 4

Add this group on remind to get updates on where
we'll go next!

Open to all
ages!
(6-8 year old's
must have an
adult with
them)

→ Hiking
→ Water Activities
→ Tours
→ Cooking
→ Challenges
→ And More!



Scan the QR Code to
join the text remind
group or text 81010
with @mercex



**Cooperative
Extension Service**

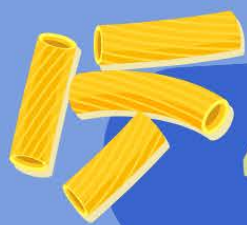
Agriculture and Natural Resources
Family and Consumer Sciences
4-H Youth Development
Community and Economic Development

MARTIN-GATTON COLLEGE OF AGRICULTURE, FOOD AND ENVIRONMENT

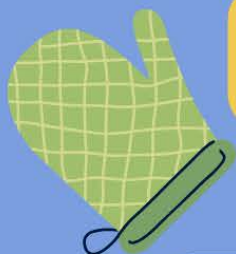
Educational programs of Kentucky Cooperative Extension serve all people regardless of economic or social status and will not discriminate on the basis of race, color, ethnic origin, national origin, creed, religion, political belief, sex, sexual orientation, gender identity, gender expression, pregnancy, marital status, genetic information, age, veteran status, physical or mental disability or reprisal or retaliation for prior civil rights activity. Reasonable accommodation of disability may be available with prior notice. Program information may be made available in languages other than English. University of Kentucky, Kentucky State University, U.S. Department of Agriculture, and Kentucky Counties, Cooperating. Lexington, KY 40506



Disabilities
accommodated
with prior notification.



4-H COOKING CLUBS



Cloverbud Cooking

Open to youth 6-8 years old
Club will meet on the 3rd Tuesday of the month



October 21, 5:30-6:30 PM

NOVEMBER 18

DECEMBER 16

JANUARY 20

FEBRUARY 24

MARCH 17

APRIL 21

MAY 19

RSVP BY CALLING THE OFFICE AT (859) 734-4378
OR BY RESPONDING TO THE REMIND
Scan the code to join the text remind or text
@cookclover to 81010



Cooking Beginners

Open to youth 9-11 years old
Club will meet on the 3rd Thursday of the month

October 16, 3:30-5:00 PM

NOVEMBER 20

DECEMBER 18

JANUARY 15

FEBRUARY 19

MARCH 19

APRIL 23

MAY 21

RSVP BY CALLING THE OFFICE
AT (859) 734-4378 OR BY
RESPONDING TO THE REMIND

Scan the code to join the text
remind or text @beginner4h
to 81010





Join

4-H ART CLUB

OCTOBER 20
NOVEMBER 17

DECEMBER 15
JANUARY 19
FEBRUARY 16

MARCH 16
APRIL 20
MAY 18

5:00-6:00

Mercer County Extension Office
Open to youth 9 years old and up

MUST RSVP TO THE REMIND TEXT
JOIN THE REMIND BY SCAN THE QR CODE OR
TEXT@4HART25 TO 81010



**Cooperative
Extension Service**

Agriculture and Natural Resources
Family and Consumer Sciences
4-H Youth Development
Community and Economic Development

MARTIN-GATTON COLLEGE OF AGRICULTURE, FOOD AND ENVIRONMENT

Educational programs of Kentucky Cooperative Extension serve all people regardless of economic or social status and will not discriminate on the basis of race, color, ethnic origin, national origin, creed, religion, political belief, sex, sexual orientation, gender identity, gender expression, pregnancy, marital status, genetic information, age, veteran status, physical or mental disability or reprisal or retaliation for prior civil rights activity. Reasonable accommodation of disability may be available with prior notice. Program information may be made available in languages other than English.
University of Kentucky, Kentucky State University, U.S. Department of Agriculture, and Kentucky Counties, Cooperating.
Lexington, KY 40506



Disabilities
accommodated
with prior notification.



4-H



SHOOTING SPORTS ARCHERY & BB PRACTICES

**ARCHERY - OCTOBER 7 & 21, NOVEMBER 4 & 18
BB/PELLET-OCTOBER 14 & 28, NOVEMBER 11 & 25
6:30 P.M.**

**BOYLE COUNTY EXTENSION OFFICE
INDOOR SHOOTING RANGE
99 CORPORATE DRIVE, DANVILLE**



OPEN TO YOUTH IN BOYLE, LINCOLN & MERCER COUNTIES

FOR YOUTH 9-19 YEARS OLD WHO ARE INTERESTED IN SHOOTING SPORTS. WE PROVIDE A SAFE LEARNING EXPERIENCE FOR ALL LEVELS OF SHOOTERS, BOTH THOSE INTERESTED IN COMPETITION AND THOSE INTERESTED IN LEARNING A NEW SPORT. YOUTH MEET FOR PRACTICE EVERY TUESDAY EACH MONTH AT THE BOYLE COUNTY COOPERATIVE EXTENSION SHOOTING RANGE

YOUTH LEARN MARKSMANSHIP, THE SAFE AND RESPONSIBLE USE OF FIREARMS, THE PRINCIPLES OF ARCHERY, AND MUCH MORE.

THE ACTIVITIES OF THE PROGRAM AND THE SUPPORT OF CARING ADULT LEADERS PROVIDE YOUNG PEOPLE WITH OPPORTUNITIES TO DEVELOP LIFE SKILLS, SELF-WORTH, AND CONSERVATION ETHICS.



To receive text reminds join by texting @boylemerc to #81010



**FOR MORE INFORMATION PLEASE CONTACT YOUR COUNTY
COOPERATIVE EXTENSION OFFICE
BOYLE COUNTY - 859-236-4484
LINCOLN COUNTY - 606-365-2459
MERCER COUNTY - 859-734-4378**

**Cooperative
Extension Service**

Agriculture and Natural Resources
Family and Consumer Sciences
4-H Youth Development
Community and Economic Development

MARTIN-GATTON COLLEGE OF AGRICULTURE, FOOD AND ENVIRONMENT

Educational programs of Kentucky Cooperative Extension serve all people regardless of economic or social status and will not discriminate on the basis of race, color, ethnic origin, national origin, creed, religion, political belief, sex, sexual orientation, gender identity, gender expression, pregnancy, marital status, genetic information, age, veteran status, physical or mental disability or reprisal or retaliation for prior civil rights activity. Reasonable accommodation of disability may be available with prior notice. Program information may be made available in languages other than English. University of Kentucky, Kentucky State University, U.S. Department of Agriculture, and Kentucky Counties, Cooperating. Lexington, KY 40506



Disabilities
accommodated
with prior notification.

MERCER COUNTY 4-H

4-H TEEN CLUB



OPEN TO ANY YOUTH IN MIDDLE SCHOOL & HIGH SCHOOL

LEADERSHIP
DEVELOPMENT

OCTOBER 1 & NOVEMBER 5
3:30-5:00 PM

@

MERCER COUNTY EXTENSION OFFICE
1007 LEXINGTON ROAD,
HARRODSBURG



SCAN QR CODE OR
TEXT 81010 AND
ENTER @TEENMER
TO JOIN TEEN
REMIND

LEADERSHIP
OPPORTUNITIES

IF YOU NEED A RIDE FROM SCHOOL CALL 859-734-4378

Cooperative Extension Service

Agriculture and Natural Resources
Family and Consumer Sciences
4-H Youth Development
Community and Economic Development

MARTIN-GATTON COLLEGE OF AGRICULTURE, FOOD AND ENVIRONMENT

Educational programs of Kentucky Cooperative Extension serve all people regardless of economic or social status and will not discriminate on the basis of race, color, ethnic origin, national origin, creed, religion, political belief, sex, sexual orientation, gender identity, gender expression, pregnancy, marital status, genetic information, age, veteran status, physical or mental disability or reprisal or retaliation for prior civil rights activity. Reasonable accommodation of disability may be available with prior notice. Program information may be made available in languages other than English. University of Kentucky, Kentucky State University, U.S. Department of Agriculture, and Kentucky Counties, Cooperating. Lexington, KY 40506



Disabilities
accommodated
with prior notification.

MERCER COUNTY 4-H

HOMESCHOOL CLUB

PROJECT FOCUSED



**Wednesday, October 1
12:00 - 1:30 pm**

**At Mercer County Extension Office
1007 Lexington Road**

FREE!

**PLEASE NOTE MUST RSVP
EACH MONTH SO WE HAVE
ENOUGH SUPPLIES BY
CALLING 859-734-4378**



**TO RECEIVE TEXT REMINDS
@HOMEMERCER TO #81010
SCAN THE QR CODE**



**Cooperative
Extension Service**

Agriculture and Natural Resources
Family and Consumer Sciences
4-H Youth Development
Community and Economic Development

MARTIN-GATTON COLLEGE OF AGRICULTURE, FOOD AND ENVIRONMENT

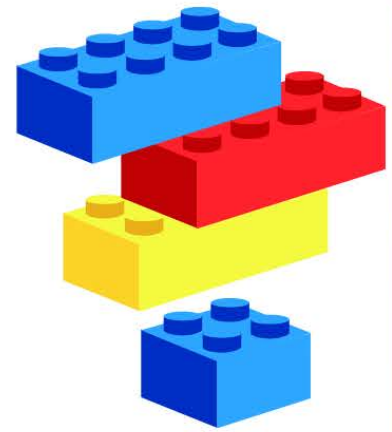
Educational programs of Kentucky Cooperative Extension serve all people regardless of economic or social status and will not discriminate on the basis of race, color, ethnic origin, national origin, creed, religion, political belief, sex, sexual orientation, gender identity, gender expression, pregnancy, marital status, genetic information, age, veteran status, physical or mental disability or reprisal or retaliation for prior civil rights activity. Reasonable accommodation of disability may be available with prior notice. Program information may be made available in languages other than English. University of Kentucky, Kentucky State University, U.S. Department of Agriculture, and Kentucky Counties, Cooperating. Lexington, KY 40506



Disabilities
accommodated
with prior notification.

LEGO BUDS

Youth will use Legos to build
a specific item each month.
Youth will then share their
design with the entire group



Open to youth K-3rd grade

MEETS ON THE 2ND MONDAY OF THE MONTH
AT THE MERCER COUNTY EXTENSION OFFICE
3:30-5:00 P.M.

OCTOBER 20
NOVEMBER 10
DECEMBER 8
JANUARY 12

FEBRUARY 9
MARCH 9
APRIL 13
MAY 11



TO JOIN TEXT
REMIND SCAN
THE QR CODE

**Cooperative
Extension Service**

Agriculture and Natural Resources
Family and Consumer Sciences
4-H Youth Development
Community and Economic Development

MARTIN-GATTON COLLEGE OF AGRICULTURE, FOOD AND ENVIRONMENT

Educational programs of Kentucky Cooperative Extension serve all people regardless of economic or social status and will not discriminate on the basis of race, color, ethnic origin, national origin, creed, religion, political belief, sex, sexual orientation, gender identity, gender expression, pregnancy, marital status, genetic information, age, veteran status, physical or mental disability or reprisal or retaliation for prior civil rights activity. Reasonable accommodation of disability may be available with prior notice. Program information may be made available in languages other than English.
University of Kentucky, Kentucky State University, U.S. Department of Agriculture, and Kentucky Counties, Cooperating.
Lexington, KY 40506



CLOVERBUDS AFTERSCHOOL



1ST TUESDAY OF EACH MONTH

SEPTEMBER 30
NOVEMBER 4
DECEMBER 2

3:30- 5:00

JANUARY 6
FEBRUARY 3
MARCH 3
APRIL 14
MAY 5

Ages: Kindergarten to Third Grade

Text to 81010 with message
@clovermer to join Cloverbud
Afterschool text remind and RSVP
for club meetings or scan qr code.



**AT THE MERCER COUNTY
EXTENSION OFFICE**

**1007 LEXINGTON ROAD
HARRODSBURG**

**MUST RSVP TO ATTEND
FREE TO ATTEND
SNACK PROVIDED**

**FOR QUESTIONS
CALL (859)734-4378**

 **Martin-Gatton**
College of Agriculture,
Food and Environment
University of Kentucky.

Cooperative Extension Service

Agriculture and Natural Resources
Family and Consumer Sciences
4-H Youth Development
Community and Economic Development

MARTIN-GATTON COLLEGE OF AGRICULTURE, FOOD AND ENVIRONMENT

Educational programs of Kentucky Cooperative Extension serve all people regardless of economic or social status and will not discriminate on the basis of race, color, ethnic origin, national origin, creed, religion, political belief, sex, sexual orientation, gender identity, gender expression, pregnancy, marital status, genetic information, age, veteran status, physical or mental disability or reprisal or retaliation for prior civil rights activity. Reasonable accommodation of disability may be available with prior notice. Program information may be made available in languages other than English. University of Kentucky, Kentucky State University, U.S. Department of Agriculture, and Kentucky Counties, Cooperating. Lexington, KY 40506



Disabilities
accommodated
with prior notification.

Mercer County 4-H Natural Resources Club

Mercer County Extension Office

6:00 p.m.

October 23, November 20, December 18,
January 29, February 26, March 26,
April 30, May 14

Open to
youth 9-18
years old



**Youth will focus on forestry project:
Leaf prints & Leaf Collections,
Compass and Pacing, and more
Youth will also have the opportunity to
compete at State competitions.**

Scan the code to join the text remind



RSVP by Calling 859-734-4378

**Cooperative
Extension Service**

Agriculture and Natural Resources
Family and Consumer Sciences
4-H Youth Development
Community and Economic Development

MARTIN-GATTON COLLEGE OF AGRICULTURE, FOOD AND ENVIRONMENT

Educational programs of Kentucky Cooperative Extension serve all people regardless of economic or social status and will not discriminate on the basis of race, color, ethnic origin, national origin, creed, religion, political belief, sex, sexual orientation, gender identity, gender expression, pregnancy, marital status, genetic information, age, veteran status, physical or mental disability or reprisal or retaliation for prior civil rights activity. Reasonable accommodation of disability may be available with prior notice. Program information may be made available in languages other than English.
University of Kentucky, Kentucky State University, U.S. Department of Agriculture, and Kentucky Counties, Cooperating.

Lexington, KY 40506



Disabilities
accommodated
with prior notification.

2024-2025



MERCER COUNTY 4-H RECOGNITION EVENT

**NOVEMBER 24, 2025
MERCER COUNTY
EXTENSION OFFICE
6:30 P.M.**

DEADLINE TO RSVP: MONDAY, NOV. 17

If you have participated in 4-H clubs, 4-H camps/conferences, community service, speech & county demonstrations, honors achievement, awards trip winners, etc this last year will be recognized. Youth and adults completing the link will get something and maybe multiple things based on your 4-H involvement. We will also be recognizing outstanding project leaders, contributors, and other special guests. The banquet will be serving a catered meal. The cost for the steak meal will be \$10.00 per adult (over 19) and youth are free.

YOUTH & VOLUNTEER PLEASE COMPLETE

PLEASE USE THIS LINK TO COMPLETE YOUR LEVEL OF PARTICIPATION. THIS IS REQUIRED SO WE WILL PREPARE AWARDS FROM THIS INFORMATION; THIS WILL ALSO BE THE RSVP FOR THE BANQUET - <https://bit.ly/mercer4hbanquet25>

**Cooperative
Extension Service**

Agriculture and Natural Resources
Family and Consumer Sciences
4-H Youth Development
Community and Economic Development

MARTIN-GATTON COLLEGE OF AGRICULTURE, FOOD AND ENVIRONMENT

Educational programs of Kentucky Cooperative Extension serve all people regardless of economic or social status and will not discriminate on the basis of race, color, ethnic origin, creed, religion, political belief, sex, sexual orientation, gender identity, gender expression, pregnancy, marital status, genetic information, age, veteran status, physical or mental disability or reprisal or retaliation for prior civil rights activity. Reasonable accommodation of disability may be available with prior notice. Program information may be made available in languages other than English. University of Kentucky, Kentucky State University, U.S. Department of Agriculture, and Kentucky Counties, Cooperating. Lexington, KY 40506



Join Mercer 4-H



To Do List



Join us on Facebook for updates -
Mercer County 4-H (KY)

FOLLOW



Fill out enrollment forms for each child (5-18 years Old), visit our website and click on 4-H, then forms: <https://mercer.mgcafe.uky.edu/>



Join Text Reminds for interested clubs



Read the 4-H newsletter each month for information



Call the office before the club meeting for van transportation from school to Mercer Co. Extension Office, 1007 Lexington Road Harrodsburg 859-734-4378



Enjoy a variety of activities within 4-H!



Cooperative Extension Service

Agriculture and Natural Resources
Family and Consumer Sciences
4-H Youth Development
Community and Economic Development

MARTIN-GATTON COLLEGE OF AGRICULTURE, FOOD AND ENVIRONMENT

Educational programs of Kentucky Cooperative Extension serve all people regardless of economic or social status and will not discriminate on the basis of race, color, ethnic origin, national origin, creed, religion, political belief, sex, sexual orientation, gender identity, gender expression, pregnancy, marital status, genetic information, age, veteran status, physical or mental disability or reprisal or retaliation for prior civil rights activity. Reasonable accommodation of disability may be available with prior notice. Program information may be made available in languages other than English. University of Kentucky, Kentucky State University, U.S. Department of Agriculture, and Kentucky Counties, Cooperating.

Lexington, KY 40506



Disabilities
accommodated
with prior notification.



Mercer 4-H

Holiday One Stop Shop



**The Stable at Mercer County Fairgrounds
560 Linden Ave
Harrodsburg, KY**



NOV 8

9AM- 3PM

**VENDORS SCAN
FOR APPLICATION**



\$6 LUNCH AVAILABLE

**VENDORS WANTED
FOR MORE INFORMATION
CALL 859-734-4378 OR EMAIL
BETH.MADDOX@UKY.EDU**



*Join Us and get
ahead on Holiday
Shopping*

bit.ly/onestopshop25





October 2025



Sunday	Monday	Tuesday	Wednesday	Thursday	Friday	Saturday
Sept. 28	Sept. 29 Explorers 3:30-5 @ Extension	Sept. 30 Cloverbuds 3:30-5 @ Extension Cloverbud Cooking 5:30-6:30 @ Extension	1 Chi Rho School Club Homeschool Club 12-1:30 @ Extension County 4-H Teen Club 3:30 @ Extension Office	2 Burgin School Clubs Cat Club 6:00 @ Extension Pumpkin Day Check In 4-6 @ Extension	3 Pumpkin Day Check In 9AM 12PM @ Extension Pumpkin Decorating 3:30-5 @ Extension	4 Harvest Home & Table Fair 10AM-2PM @ Extension Office
5	6	7 Archery 6:30@ Boyle Extension	8	9	10	11
Mercer/Burgin Fall Break						
12	13	14 BB/Pellet Rifle/Pistol 6:30 @Boyle Extension	15	16 Cooking Beginners 3:30-5 @ Extension Rabbit Club 6:00 @ Extension	17	18
Burgin Fall Break						
19	20 Legobuds 3:30-5:00 Art Club 5:00-6:00 @ Extension Horse Club 6:00 -7:00 @ Farm	21 Cloverbud Cooking 5:30-6:30 Livestock Club 6:00-7:00 @ Extension Archery 6:30@ Boyle Extension	22	23 Natural Resources 6:00 - Extension	24	25
26	27 Poultry Club 6:30 @ Extension	28 BB/Pellet Rifle/Pistol 6:30 @Boyle Extension	29	30	31 MCIS School Clubs Happy Halloween!	

AFTERSCHOOL TRANSPORTATION TO EXTENSION OFFICE

Please notify the Extension Office if you need a ride to 4-H Club Meeting/Activities after school. Elementary youth must also send a note to school. **YOU MUST CALL 734-4378 PRIOR to the Event.** The Extension Van will make runs to pick up student at schools.



Mercer County 4-H Youth Development Staff:

A handwritten signature in dark ink, appearing to read "Dana Anderson".

**Dana Anderson, Mercer County
Extension Agent for 4-H
Youth Development**

**Beth Maddox,
Mercer County
Extension 4-H
Program Assistant**

A handwritten signature in dark ink, appearing to read "Beth Maddox".